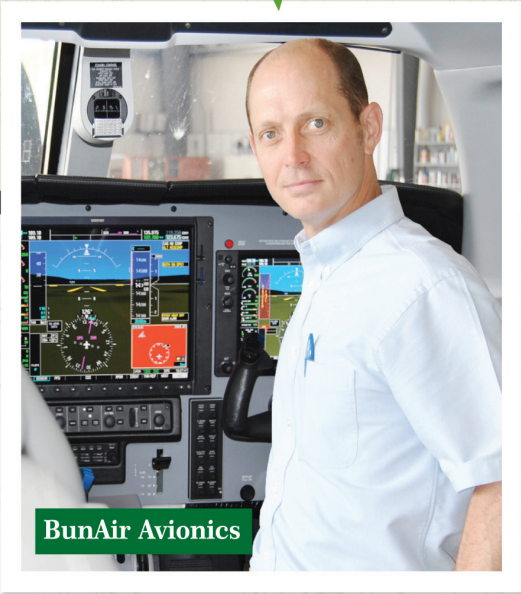
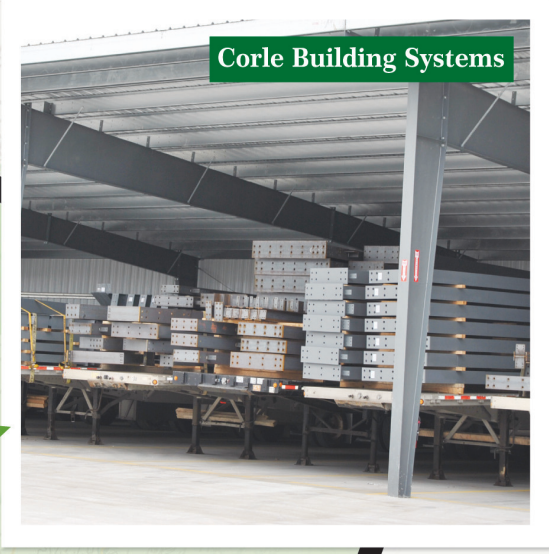


BEDFORD COUNTY Progress & Industry GROWING from WITHIN



Brought to you by **BCDA**

Growing from within... A year of homegrown economic development

By Harry Zimble
For The Gazette

Economic development — the creation of businesses and jobs that support Bedford County families — is a multi-faceted endeavor. The staff and Board of Directors at the Bedford County Development Association devote a great deal of time and resources to attracting new businesses to the area and helping to grow existing businesses to grow.

The BCDA's Business Park II is a prime example of how Bedford County can attract new companies. Over the past two years, BCDA has complet-

ed engineering, design, permitting, and earthwork on nearly 80 acres. It is ready for a new or expanding business to build up to a 780,000 square-foot facility.

In addition to the Park, BCDA can offer start-up businesses and entrepreneurs' space in its Hess Business Center.

This past year, a number of Bedford County businesses demonstrated that the companies that are already here often generate economic development. That is why BCDA looks for every opportunity to help local companies grow and expand.

The coming year promises to continue the amazing growth.

This year's edition of the Progress and Industry presents the good news about local companies and organizations.

Consider the growth at Corle Building Systems. According to President John Corle, the company's business has grown by 35 percent in the past year. That's testament to the vision of the company's leaders as well as its excellent workforce, according to Corle.

From its plant near Imler, Corle Building Systems ships metal buildings across North America.

MDL Manufacturing is currently adding 21,000 square feet of space to its plant in the Bedford Business Park I. The company continues to prosper in Bedford County.

Another local business that continues to grow is Lampire Biologicals. Led by the vision of company CEO Greg Krug, Lampire is going to be growing its abilities to serve new and expanding markets in the several industries the company serves.

The Bedford County Technical Center has greatly enhanced its welding program by adding new equipment and collaborating with local manufacturers. This will lead to more workers that are skilled to add to the great Bedford County workforce.

A new Practical Nursing program is coming Bedford County. In fact, its first class of ten has already begun its studies. This will not only expand job opportunities for the

This past year, a number of Bedford County businesses demonstrated that the companies that are already here often generate economic development. That is why BCDA looks for every opportunity to help local companies grow and expand.

graduates, it will also help improve the quality of healthcare in Bedford County.

The new program will be administered by the Somerset County Technology Center and is the result of a cooperative effort that included the assistance of BCDA and its Hess Business Center.

Bun Air, Inc. is the Fixed Base Operator at the Bedford County Airport. Bun Air recently received certification as a provider of avionic services to jets and other aircraft.

This is a major leap forward for the airport, transportation in Bedford County and economic development. Bedford is now a place that can service aircraft from a large geographic region. This is likely to lead to jobs and other economic development.

The coming year promises to continue the amazing growth that has been happening right here in Bedford County, where economic development often means growing from within.

Whole House Water Systems

Kinetico
home water systems

SYSTEMS TO REMOVE:

Hardness, Iron ,Bad Taste & Odors, Sulfur, Chlorine, Nitrates, Lead, Chemicals, Bacteria, and more...

EFFICIENT OPERATION

No Electric or Timeclocks
Advanced Technology
Up To 99% Efficiency Rating
Sodium Free Option
Bottled Water Quality on tap

FREE
WATER ANALYSIS* & ESTIMATE

We can fix your water problems!

48 Month Special Financing
on Whole House Kinetico Systems -

FREE Filters & Supplies
with any Kinetico whole house system over \$699—
\$100 Value

NEED SERVICE?

- We service all brands no matter where you bought it
- We stock parts, filters and supplies for most brands
- Order your supplies online at martinwater.com or pick them up at any Bedford Farm Bureau.

MARTIN
WATER CONDITIONING
Refreshing Water Treatment Solutions

Bedford • Roaring Spring • Saylstown
800-887-7555
MARTINWATER.COM
PA#16492

*Free water test includes hardness, iron, pH, tds, chlorine. **48 Month financing requires credit approval and is not valid toward prior sales. ***Free filters and supplies cannot be combined with financing or other special offers. Not valid toward prior sales.

“Your Hometown Jeweler”

QUALITY JEWELRY
SERVICE • REPAIR

MITCHELL JEWELERS

111 S. Juliana St. BEDFORD • 814-623-1326

Proud of our Past, Prepared for our Future



BCDA Staff: Terri Brumbaugh, Bette Slayton, Melanie Miller

*When there’s a need —
BCDA will find a way....*

BCDA’s Board meets monthly to develop and implement economic development policies that positively affect Bedford County and the state. Visit our website: **www.bcda.org**

BCDA BOARD MEMBERS:

Bo Pratt, Chair – Bedford
Sean Bardell, Vice Chair – Dutch Corner
Scott Jones, Treasurer – Hollidaysburg
Allen Sell, Secretary – Claysburg
Bob Octavio, Asst. Treasurer – Bedford
Doug Gerber, Asst. Secretary – Everett
Travis Collins, Immediate Past Chair – Everett
John Carlin – Breezewood
Gregory Krug – Pipersville

Alan Frederick – Friends Cove
JP Tambourine – State College
Trudy Mitchell – Saxton
Linda Bullington – Manns Choice
Ted Chwatek – Bedford
David DiPasquale – Bedford
Sara Letzo – Bedford
Brett Schoenfield – Bedford
James Wistar – Philadelphia
Jenny DeLong – Bedford

EX-OFFICIO

MEMBERS:
Kirt Morris
Barry Dallara
Paul Crooks
Bedford County Commissioners

Bedford County Development Association

One Corporate Drive, Bedford, PA 15522 • 814-623-4816 • info@bcda.org • www.bcda.org

Meet the 2015 BCDA Board



Front Row (l-r): Immediate Past Chair, *Travis Collins*, B.C. Stone; Assistant Treasurer, *Bob Octavio*, Cycling Sports Group; Vice Chair, *Sean Bardell*, Howard Hanna Johnston Realty; Chair, *Bo Pratt*, Rockland Manufacturing Company; Assistant Secretary, *Doug Gerber*, Rex Heat Treat; Treasurer, *Scott Jones*, Recreational Equipment Inc.

Back Row (l-r): *Barry Dallara*, Bedford County Commissioner; Vice President, *Terri Brumbaugh*, BCDA; *Linda Bullington*, Bullington Financial Services LCC; *Sara Letzo*, 10/09 Kitchen; President, *Bette Slayton*, BCDA; *Trudy Mitchell*, Southern Alleghenies Planning & Development; *Kirt Morris*, Bedford County Commissioner; *John Carlin*, Quality Inn Breeze Manor; *Alan Frederick*, Frederick Farms, Inc.; *Ted Chwatek*, Hometown Bank of PA; *James Wistar*, Everite Door Company; *J.P. Tambourine*, FirstEnergy; *Jenny DeLong*, Bun Air Corp; *Greg Krug*, Lampire Biological Laboratories; Office Manager, *Melanie Miller*, BCDA; *David DiPasquale*, Bedford County Technical Center

Missing from the picture is: Secretary, *Allen Sell*, Bedford Area School District; *Brett Schoenfield*, Omni Bedford Springs Resort & Spa; *Paul Crooks*, Bedford County Commissioner.

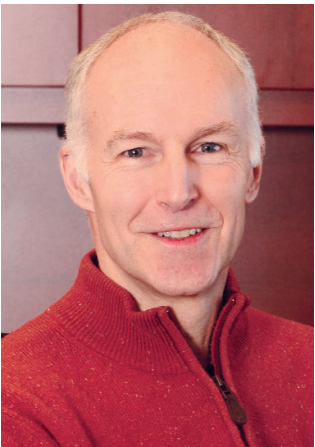
New 2015 Board Members



Jenny DeLong
Bun Air Corp



Brett Schoenfield
Omni Bedford Springs



James Wistar
Everite Door Company

BCDA’s Business Park II a premiere property for economic development

Sometimes, growing from within means getting ready to attract new businesses and organizations to Bedford County.

The very best example of economic development readiness may be BCDA's Business Park II.

During the past two years, BCDA's staff and Board of Directors have worked to turn the nearly 80 acres in Business Park II into pad ready sites for new and established businesses.

To expedite the site selection process -- to make it as convenient as possible for a new company to move into Bedford County -- BCDA has overseen the engineering, design, permitting, and earthwork. The project is now ready for active and aggressive marketing.

The market is demanding more pad-ready sites. “We moved forward with this project knowing that it will eliminate months in site preparation for future buyers,” noted Bo Pratt, Chair, BCDA Board of Directors. “This is a tremendous opportunity given that the site is pad-ready, permitted, and as a Keystone Opportunity Zone. Available utilities are in place, including an abundant and reliable electric supply.”

The project engineer is H.F. Lenz of Johnstown, and the contractor is Glenn O. Hawbaker of State College.

The Business Park II includes 70 acres of pad-ready sites that can accommodate a 780,000 square foot building. It has a great location and access to an excellent transportation system.

BCDA invites every



Aerial view of BCBP II during construction with REI Distribution Center in the background.



Our Mission:
The Bedford County Chamber of Commerce involves and unifies our membership to promote the continuous improvement of the business climate in our region.

You are invited to JOIN the CHAMBER and be part of our ongoing effort to connect & build our business community.

Member Opportunities Include:
Education ~ Exposure ~ Networking ~ Savings
Be part of our diverse & dynamic membership organization for the benefit of your business & our community.

Contact Us:
125 S. Juliana Street
Bedford, PA 15522
Phone: 814.623.2233



www.BedfordCountyChamber.com



Structural Fiberglass, Inc.

814-623-0458 814-623-0978 fax

4766 Business Route 220 North

P.O. Box 615, Bedford, PA 15522

e-mail: strlfgls@embarqmail.com

Engineering and Fabrication of Fiberglass Reinforced Plastics

- ✓ Walkways
- ✓ Platforms
- ✓ Handrails
- ✓ Ladders
- ✓ Stairways
- ✓ Supports

www.structuralfiberglass.com

“This is a tremendous opportunity given that the site is pad-ready, permitted, and as a Keystone Opportunity Zone.”
— Bo Pratt

Lampire Biological Laboratories leading the way in biotechnology

New contract means new jobs, economic development for county

Lampire Biological Laboratories continues to lead Bedford County, and the surrounding region, into the exciting field of biotechnology. Now, the company is in the process of expanding its Everett facility's manufacturing capacity to meet the needs of a \$5 million contract that is scheduled to be completed over the

next five years.

"We have a new contract from a Fortune 50, international, pharmaceutical company," said Gregory Krug, president and CEO, Lampire Biological Laboratories. "We will be doing a specialized tissue processing, preparing the tissue for a special extraction."

The extraction itself will

be done by the pharmaceutical company, Krug explained. The resulting material will be an injectable product that will aid in the treatment of arthritis.

"We are not expanding our facility. Instead we are renovating internal space, giving our staff an additional 3,000 to 4,000 square feet of CGMP manufacturing space."

CGMP refers to current good manufacturing practices required to conform to the guidelines recommended by agencies that control authorization and licensing for manufacture and sale of food, drug products, and active pharmaceutical

products.

The new contract means the addition of 6 jobs to Lampire's workforce, Krug explained. "We've already hired additional people," said Krug, "expanding in several areas." These professionals include technicians, managers and biologists.

Krug noted that the five-year contract will mean a little more than \$1 million in business each year for Lampire.

The new contract required the purchase of specialized equipment and water systems costing \$900,000. "We received financing help from Catalyst Connection, Clearfield

"The company we are doing the work for was very impressed by our interaction with the Bedford County Technical Center. It was a factor in our receiving the contract."

— Gregory Krug

Bank, Southern Alleghenies Planning and Development Commission in Altoona, and Lampire," stated Krug.

Krug explained that BCDA was very helpful in moving the project forward.

"The company we are doing the work for was very impressed by our interaction with the Bedford County Technical Center. It was a factor in our

receiving the contract. This has been a very collaborative effort," said Krug.

Lampire, BCDA and the Tech Center produced a video last year entitled "Revolutionary." It promotes biotechnology to students and is an effective marketing tool for Lampire and BCDA. To view the video go to <https://www.youtube.com/watch?v=tCU48Pad6CE>



Manufacturing Technicians Matthew Shinall, and Derek Weyandt) make adjustments to 700L Production Tank, taking measurements and adding chemicals.



Gary Klinger, Laboratory Manager, validating 4400C Commercial Reverse Osmosis (RO) Purified Water System.

WELCOME TO HISTORIC DOWNTOWN BEDFORD

SPECIALTY SHOPS

VOTED

UNIQUE DINING

TOP 10 MAIN ST
= IN THE NATION =

From quaint shops along the way to upscale boutiques, downtown Bedford has something for everyone! Unique eateries, cafes and restaurants will satisfy your palate after a busy day of shopping and touring. Whether a weekend getaway or a one day adventure, you're going to love what you experience. Discover for yourself why downtown Bedford was voted one of the Top 10 Main Streets in the Nation!



VISIT TODAY


HISTORIC DOWNTOWN BEDFORD
www.downtownbedford.com

Like us on
facebook



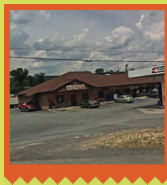
Our passion for providing great pizza fast and at affordable prices makes us the ideal place to bring your family for lunch or dinner no matter the time of year.

Since our start in 1980, we've grown from one location to twelve.

All locations serve our traditional and now famous Best Way square cuts as well as subs, salads and squarebolis.



So stop by a location near you, and
Drive-thru, Eat-In, or Carry-Out.



Bedford 6371
Lincoln Highway
814-623-9077



Somerset 1456
N. Center Ave.
814-701-2110

Finley Bee Antiques offers one-of-a-kind items



Finley Banks owns and operates Finley Bee Antiques and Gift Shop in Bedford. The shop specializes in one-of-a-kind antiques and other home decor and gift ideas.

By Erin Thompson
Gazette Staff Writer

Ever since 3-year-old Finley Banks could talk, she has referred to herself as “Finley Bee.” So when her grandmother, Tammy Welsh, retired from Bedford Area School District and opened her own shop in Bedford, coming up with a name was an “an easy choice,” Welsh said.

Welsh opened her gift shop, Finley Bee Antiques and Gift Shop in September of last year. There, she offers one-of-a-kind antiques, repurposed antiques and other home decor and gift items. She has a “bee theme” throughout the store for her granddaughter.

Not long after Welsh opened her shop, her second granddaughter was born, so she slightly altered the name of her shop to “Finley Bee

Antiques and Gift Shop, featuring the Garden of Eden.”

“It just fit perfectly,” she said.

Finley Bee Antiques and Gift Shop, featuring the Garden of Eden, offers a variety of antiques and items that can be reused and repurposed for decoration in homes. “I offer one-of-a-kind decorative pieces,” said Welsh, who added that she also offers top-notch customer service. “I like to give people ideas of ways to use items and decorate their homes.”

Her shop also offers gift items such as candles and soaps.

Before Welsh opened her own business in town, she was a secretary at Bedford Area School District for 31 years.

“I’ve always had a love for antiquing and gardening,” said Welsh. “I wanted to retire and do some-

thing I loved and I love old the character that they offer.”

Before opening her own shop at 113 B South Richard St., Bedford, Welsh was a vendor at a local coop store until she decided it was time to open up her own space.

In the future, Welsh hopes to increase her local customer base.

“I’ve been doing some different things to try to draw them in,” she said “And if I have more grandchildren, I’ll have to expand the name.”

Finley Bee Antiques and Gift Shop, featuring Garden of Eden is open Monday, Thursday, Friday, Saturday and Sunday 11 a.m. to 5 p.m.. It is closed Tuesday and Wednesday. Visit the Facebook page for information on items available in the shop located at 113B S. Richard St.

GUY'S HARDWARE, INC.
Serving Bedford County Since 1966
Manns Choice, PA • 623-6876

**POOLS AND POOL SUPPLIES
LAWN & GARDEN SEEDS
FERTILIZERS
LOOSE GARDEN SEEDS
COMPLETE LINE OF PLUMBING NEEDS
SEE OUR NEW BATH & SHOWER DISPLAY
(MANY TO CHOOSE FROM)
HEATING EQUIPMENT OF ALL TYPES:
OUTDOOR FURNACES, GEOTHERMAL INSTALLATION &
ALL YOUR AIR CONDITIONING NEEDS
STOP TODAY! IF WE DON'T HAVE IT,
YOU DON'T NEED IT!**

HOURS: M-F 7:30AM-5:30PM; SAT. 7:30AM-4PM; SUN. 9AM-2PM
EMAIL: guyshardware@embarqmail.com

**-- NOW CARRYING HUSQVARNA PRODUCTS --
Stop & see our new small engine shop!**

**Zembower
Oil^{Inc.}**

“The Heat is on”

**Home Heating Oil Delivery Service
Serve Gas and Diesel to
Local Farmers**

**Call us today
623-2148
Railroad St., Bedford**

ELECTRICAL, HEATING, AIR CONDITIONING & REFRIGERATION
Residential • Industrial • Commercial

ELECTRICAL SERVICES
DESIGN BUILT PROJECTS CUSTOM LIGHTING PROJECTS
NEW CONSTRUCTION/REMODEL • HEAT PUMPS • AIR CONDITIONING
REFRIGERATION • OIL FIRED FURNACES & BOILERS
ELECTRICAL MAINTENANCE • BUCKET TRUCK SERVICE

Serving Bedford County for over 50 Years

**9497 Lincoln Highway, Bedford, Pa.
623-8159 • 800-296-8159**
Major Credit Cards Accepted

PA #019553

Shop brings new fashion lines to parents

**By Elizabeth Coyle
Gazette Managing Editor**
Madelyn Rose Children's Boutique, 118 North Richard St., Bedford, gives families a chance to purchase items they likely won't see in a shopping mall.

Owner Katie Bullington, who opened the store in November of 2014, describes her business as a retail shop for children that provides new fashion lines such as Tea, LeTop, Zutano, Botharts and others as well as accessory lines from Chewbeads and lotions and shampoos from Noodle and Boo.

"We're just trying to bring different lines that are hard to find and try to give you a big city feel with a small town charm," Bullington said.

Bullington has a business degree from Penn State. She had been the third generation working in her family's insurance company until she and her husband, Chris, took the chance of opening their own store.

"It's something I've always wanted to do and after a lot of thinking and talking it over with my husband, we decided to give it a go," the owner said.

The couple put together the business plan and opened in 30 days.

Bullington said she'd like to see the business expand longer term.

"I'd like to eventually get bigger but we're always trying to bring in new lines and trying to find things mommies want or need," Bullington said.

The sizes range from newborn to size 8 for boys



—Photo Submitted

Katie Bullington, owner of Madelyn Rose Children's Boutique, 118 North Richard St., Bedford, stands inside her shop that opened in November of 2014. The business is a retail shop for children offering fashion lines not typically seen in a mall or shopping center.

and girls.

"Our hopes are to just keep growing and hopefully make our niche here in town," the owner said.

The shop is open 10 a.m. to 6 p.m. Monday

through Saturday and noon to 4 p.m. on Sunday. Visit the Facebook page to find information on special sales, new shipments and other information.

Bullington describes her business as a retail shop for children that provides new fashion lines.

Bittner family revamps Holiday Inn Express

**By Elizabeth Coyle
Gazette Managing Editor**
The Bittner family is putting a gleaming new facade on the outside and an updated, more attractive facility inside at the Holiday Inn Express in Breezewood.

A 4.5 million project, when all completed in the fall, will have revamped guest room, a meeting space that will be significantly larger than the current facility and many new updated features, including an indoor pool.

John Bittner said the hotel is undergoing a property improvement that is part of the hotel's license agreement with Holiday Inn Express but the Bittners are going beyond the requirements to make the facility more amenable to the needs and desires of guests and business travelers.

The project will add two rooms to the hotel to bring the total to 81 but all of the guests room will be revamped completely as well as all public areas

on the first floor. The breakfast area and registration also are being renovated.

"In addition, we added space for (public) laundry, for meeting rooms ... and we added a new exercise room and side entrance," John said. A hot tub also is part of the additions.

Jim Bittner said the hotel is adding about 3,500 square feet of meeting space. "We will be able to handle groups in a classroom setting. If we open up the partition, we could probably have a class of 200 people." The room will have flat screens, multimedia access for webinars and other business needs, Jim said.

"With Breezewood's location being central to Pittsburgh and the Philly area and Harrisburg, DC and Baltimore, branch offices will bring all their sales people to a central location," John said. The hotel's expanded business meeting areas will help the Holiday Inn Express accommodate more of the meetings. These meeting

rooms are scheduled to be completed for us this fall, Jim said.

The hotel is adding about 14,000 additional square feet and "remodeling all of it," Jim said.

Some of the guest rooms are being converted to two-bedroom family suites; these improvements are to be completed by the end of June.

Improvements on the first floor are to be complete around late July and a new front desk by November, the Bittners said.

The four-story hotel opened in 2000, an addition to the Bittner family's complex that includes the Gateway Travel Plaza and its related enterprises.

The facility also will include all-new LED lighting and a heating/cooling system, too, Bittner said.

The project overall is to be completed overall by November.

For more information, visit the website www.gatewaytravelplaza.com and follow the links for the Holiday Inn Express.



The Holiday Inn Express is undergoing a property improvement project. Above, crews are working on the facade for the hotel in Breezewood. Inside, the Bittner family is revamping all of the rooms and adding two more to bring the total capacity to 81 rooms. Added meeting room space, a newly enclosed pool, renovated public areas and other amenities are part of the project to be completed in November, according to John Bittner.

Engineers Planners Surveyors Energy Consultants

**H.F. LENZ
COMPANY**

Over Six
Decades of
Engineering
Excellence

- Commissioning
- Mechanical Engineering
- Electrical Engineering
- Plumbing Engineering
- Life Safety Engineering
- Fire Protection Engineering
- Telecommunications
- Civil Engineering
- Structural Engineering
- Surveying
- Energy Management
- Construction Phase Services



JOHNSTOWN
1407 Scalp Avenue
Johnstown, PA 15904
Phone: 814-269-9300

OHIO
322 State Street
Conneaut, OH 44030
Phone: 440-599-7800

PITTSBURGH
1051 Brinton Road
Pittsburgh, PA 15221
Phone: 412-371-9073

100% TRACTOR. 0% INTEREST.

GET 0 INTEREST FOR UP TO 84 MONTHS*

Offer good on all
Mahindra 4500 Series
Shown: 4550 2WD



**5 YEAR
POWERTRAIN
WARRANTY**

**Mahindra
DEALER
DAYS
SALES EVENT**

Save on MODEL 4550 2WD
\$287 PER MONTH*

Leader's Farm Equipment

127 Equipment Rd
Everett, PA 15537
(814) 652-2809

www.leadersfarmequipment.com
leadersfarmequipment@hotmail.com

**Mahindra
Rise.**

* With approved credit. Program restrictions may apply. See dealer for details.
† All offers expire June 30, 2015.



Gazette Photo/Elizabeth Coyle

The Golden Eagle Inn, under new ownership of members of the Helsel family since 2013, was an inn with a restaurant. Last year, the Golden Eagle added a downstairs pub. The business is located in the historic building originally known as the Anderson mansion which is more than 200 years old.



Joining the owners and chefs of the Golden Eagle inn to celebrate The Pub's opening in 2014 are, front, from left, Joel Black, aide to state Rep. Jesse Topper; Trudy Mitchell from the Southern Alleghenies Planning and Development Commission; Bette Slayton from the Bedford County Development Association; Jeff Boldizar from St. Francis Small Business Development Center; and back: Executive Chef Zach Ford, owners Byron Helsel, Tom Salmon, Mary Jane Helsel, Connie Clark and Martha Helsel, and Chef Drew Ford.

Elegance, charm at the Golden Eagle Inn

By Elizabeth Coyle
The Bedford Gazette

The Golden Eagle Inn in Bedford is the happy result of the desires and efforts of owners with local ties to bring an elegance and colonial charm to downtown Bedford.

The business, newly reopened two years ago, brings the restaurant experience of two New York City restaurant workers to small-town America to create a unique cuisine. At the Golden Eagle, this is coupled with the hominess of a bed and breakfast and more recently, the warm atmosphere of a downstairs pub.

Under the ownership of Tom Salmon, Mary Jane Helsel Salmon, Constance Clark, Marty Helsel and

Byron Helsel, the Golden Eagle Inn, 131 E. Pitt St., opened in July of 2013.

The Salmons both worked in "high-volume" restaurants in New York. Mary Jane, who is from Everett, and Tom met in the city about 12 years ago. They liked the restaurant business and wanted to take the next step.

"We were living in New York and really enjoying the city but not really having a lot to show for it," Tom said. Then one January a few years ago, Mary Jane was in town when a friend, Constance Clark, pointed out that the Golden Eagle Inn was for sale.

Oralee and Jack Keifer decided to sell the business located in the building first known as the

Anderson mansion in the heart of downtown Bedford's historic district.

The building originally was constructed in 1794 by John Anderson, who also built the Bedford Springs. The building is on the National Register of Historic Places. The inn is housed in the first brick building constructed in Bedford, according to the history.

Salmon said the Golden Eagle had a liquor license for the restaurant all along but the plan from the start of the family's purchase of the property, was to open a bar. Salmon said with the help of an agent from the Pennsylvania Liquor Control Board, they secured the permit for the pub license.

The pub opened in March of 2014 and since then, the business has been growing steadily. The restaurant and pub

have been doing well and the owners would like to see the inn become as popular.

"There's some time, during Fall Foliage week-end and a couple week-ends after that, we're always full. The building seems to love activity and we'd love to do that kind of volume on a regular basis," Salmon said.

"We have wonderful customers and they come back and they come back to longer stays," he added.

"It's wonderful to get the positive feedback. They like staying at an old colonial inn," Salmon said.

"The town has quite a few charms," Salmon said. "Things are on a very nice upswing in general. There's a good choice of food, a good choice of beverages, a movie theater there," he said of the neighboring Pitt Theatre. "It's a lot of fun."

Salmon said he appreciates the development of the downtown area behind the efforts of local officials and organizations. The Bedford Heritage Trail is something he thinks will be the next feature to make a difference for businesses like the Golden Eagle.

"We're really enjoying it. I don't think I can overaccentuate it. We've been really well-received by people in town. You

feel welcome, you feel a part of it," he said.

The restaurant hours are 11 a.m. to 2 p.m. for lunch and then dinner from 5 to 9 p.m. and then Sunday for brunch from 11 a.m. to 2 p.m.

The pub is open for lunch until 2 p.m. and then reopens for the dinner crowd.

For more information, visit www.bedford-painn.com or call 814-624-0800.

Catalyst Connection - Manufacturing Technology Loan Fund (MTLF)

The MTLF is a private fund available only through Catalyst Connection. This program assists companies in the purchase of capital equipment such as: computer hardware and software, computer-aided design and computer-aided manufacturing, and numerically controlled and computer numerically controlled equipment.
<http://www.catalystconnection.org/services/?Manufacturing-Technology-Loan-Fund-19>

We support Bedford County.



Leigh Shaffer
Financial Advisor
10161 Lincoln Hwy, Everett
(Across from Wal-Mart Plaza)
814-623-1084
www.edwardjones.com

Edward Jones
MAKING SENSE OF INVESTING

Member SIPC

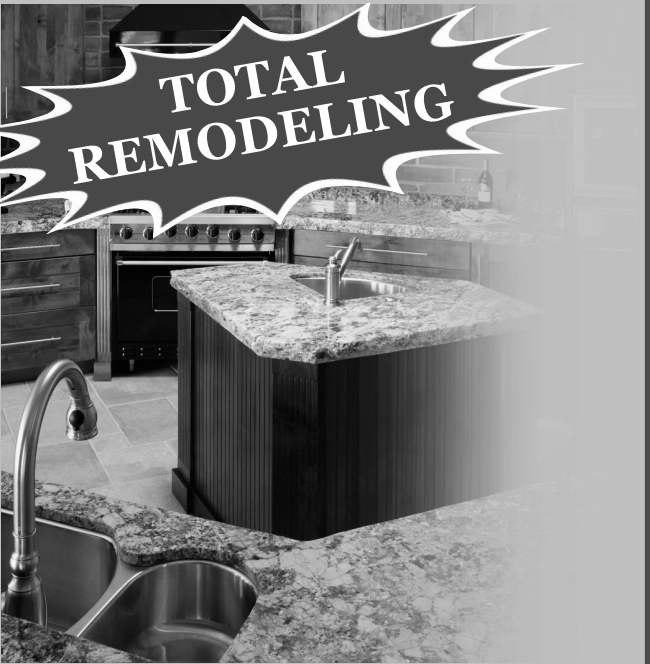
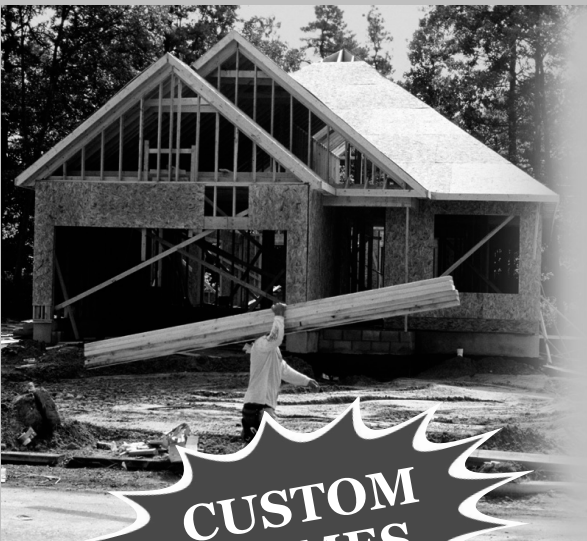
Fred Imler & Sons, Inc

General Contracting

Your "Start to Finish Builder."

With over 37 years experience.

We are your one-stop shop for all your building needs.



Roofs, Windows, Kitchens, Baths, & Floors

Additions, Decks, Kitchens, Bathrooms, Roofing, Windows, Siding, Brick Casing, Plumbing, Electrical, Drywall, Storage, Gazebos, Cabinetry, Basements, Garages, Carports, and so much more!

Call or Stop In at our office on Mile Level

Imler Plaza • Mile Level BEDFORD

Monday thru Friday 9-5; Saturday 9-2 • 623-8346

FREE In-home
Estimates &
Design

Elect ALLEN M. BERKEY

**OVER 29 YEARS OF
PUBLIC SERVICE**

Ready to Take Bedford County
in a New Direction
with Dedicated Hard Work
and Experience
in Caring for Others

**PAID FOR BY
THE CANDIDATE**

Clark Contractors a leading commercial contractor

A strong presence in Bedford County

It is hard to go anywhere in Bedford County without running into a crew from Clark Contractors. The company provides a wide range of contracting services, including commercial contracting, consulting and project management.

For more than 60 years, Clark Contractors has been a leading commercial contractor for central and southwest Pennsylvania.

Headquartered in Bedford County, the company can provide services for business of all sizes, from general construction to HVAC and electrical work.

Clifton Clark, president, notes that the company has had a pretty

good year of growth in 2015, and looks forward with optimism to 2016.

"We have found that the second quarter of 2015 to be very robust in the commercial market with lots of new projects," Clark said. "We expect our general revenue growth to be about 5% for 2015. Currently we are planning to expand our facility in 2016 to provide more warehouse housing and equipment repair space."

As a family-owned business for three generations, Clark Contractors has built its reputation on quality, job planning, organization, technical knowledge and hard work. These important factors have led to thousands of

successfully completed projects. "Our expertise

extends to retail storefronts, banking and insur-

ance buildings, healthcare clinics, warehouses, man-

ufacturing facilities and more," Clark stated.



Clifton Clark, President, Clark Contractors on the company's new Caterpillar 314 Excavator.

"We have found that the second quarter of 2015 to be very robust in the commercial market with lots of new projects."

— Clifton Clark

BCDA represents I-99 Corridor at Medical Device & Manufacturing

Over 1,100 medical device manufacturers and service providers recently converged in New York City to showcase their latest wares. FirstEnergy co-sponsored Pennsylvania's participation at the event with the PA Department of Community and Economic

Development. The state was showcased at a booth, which touted Pennsylvania's many business opportunities, and a networking event for Pennsylvania companies exhibiting at MD&M.

"Participation in this event allows our economic development partners to

network with Pennsylvania companies and also search for business recruitment opportunities. Once again FirstEnergy is proud of the time and energy our economic development partners give to this event," stated JP Tambourine, Manager, Economic Development.

"Participation in this event allows our economic development partners to network with Pennsylvania companies and also search for business recruitment opportunities."

— JP Tambourine, Manager
First Energy Economic Development



I-99 Corridor partners Jennifer Myers, CBICC, JP Tambourine, First Energy and Bette Slayton, BCDA.

Jesse Topper

STATE
REPRESENTATIVE
78th Legislative District



Bedford County continues to be one of the best places in Pennsylvania to live and work.

There are countless opportunities in our local industries and our work force. I will continue to work with you to strengthen the area's economy as Bedford County businesses compete both locally and internationally.

Paid for by "Friends of Jesse Topper"



CLARK CONTRACTORS, INC.
COMMERCIAL & INDUSTRIAL CONSTRUCTION



Homelown Bank, Bedford, Pa.

**We don't just build buildings...
We're building your future.**

**Commercial, Retail,
& Hospitality**

Banking & Insurance

Healthcare & Medical

Industrial & Manufacturing

We understand that completing a successful project requires more than simply building the structure – we must maintain an interactive relationship with our customers to ensure the job is done right. This commitment enables us to develop a long-standing relationship of trust and confidence with our customers. When the Clark name is on a project, you know the job is done right.

145 Clark Building Road Suite 7 Bedford, PA 15522 814.623.9400

www.clarkcontractorinc.com

Eat 2 Live Bistro Market offers healthy food that tastes good, too

FISHERTOWN — Handmade fresh food tastes better — that’s the philosophy that employees at Eat 2 Live Bistro Market live by and try to instill in their customers, according to manager Rick Kroft.

“All of our foods including our dressings, mayo and sauces are made from scratch to eliminate preservatives and additives,” Kroft said.

Eat 2 Live is also proud that they use a lot of local produce from family farms from right here in Bedford County, the company said. Their burgers and steaks are grass fed and are raised only five miles from the restaurant.

“It is really the best of both worlds because we get the produce and meats that are at their peak flavor and we also get to help out our local farmers too,” Kroft said.

Eat 2 Live is located at 1634 Quaker Valley Road next door to Live Well Chiropractic, both owned by Dr. Kris and Tina Arnold. The Arnolds first moved their Chiropractic and Wellness practice last July when they outgrew their former location in Cessna.

The restaurant, according to Arnold — who has been a chiropractor for 15 years — was created by accident, when he discovered the space he was moving into was too big for one business “so we decided to split it in half.”

Arnold said he decided to begin a restaurant to put focus on “real” food. This was based on conditions he had seen from his patients that were caused by the processed foods they were eating, such as arthritis, digestive problems and attention deficit hyperactivity disorder.

“At Live Well, we find there is a relationship between (the foods you eat) and your overall health,” said Arnold. “We have always encouraged our patients to eat real foods from as close to the source as possible that has nothing added or taken away.

“People are shocked to



—Photo Submitted

Eat 2 Live Bistro Market in Fishertown aims to provide healthy food that tastes good, too. Locally-grown “superfoods” are among the items available for sale aside from the restaurant. The restaurant is beside Live Well Chiropractic along Route 56, East St. Clair Township.

learn that full fat and full flavor versions of foods are much healthier than low fat, low salt and no sugar and it tastes better too,” said Dr. Arnold.

Arnold said the restaurant specializes in taking wholesome recipes like meatloaf, burgers and pasta and add a few “twists” that not only make it tasty but nutritious.

One example of this, Arnold said, is the gluten free chocolate cake that is made with beets, avocados and no artificial sweeteners.

“We have become known for our chocolate cake because it is still sweet and rich but people can’t taste they’re eating beets,” he said.

Eat 2 Live has two chefs who offer a variety of entrees made with locally-grown ingredients combined with “superfoods” from around the world like coconut, chia and raw cacao,” Kroft said.

“Our menu changes fairly often so we can take advantage of local produce when it comes into season,” said Kroft.

Eat 2 Live also offers a variety of teas, which are purchased at Everything Tea in Bedford. In their teas, they use coconut sugar and raw Pa honey for sweeteners, Kroft said.

Dr. Arnold said the restaurant offers many items that are not only gluten free but safe for



—Gazette Photo/Elizabeth Coyle

Guests enjoy the food and atmosphere at Eat 2 Live Bistro on Route 56 in East St. Clair Township.

those with food allergies, or are otherwise health conscious.

Eat 2 Live Bistro is open 11 a.m. to 8 p.m. Monday through Saturday and 11 a.m. to 2 p.m. Sunday. Follow them on facebook for weekly specials or to see their menu, visit eat2livebistro.com. For carry out or reservations call 814-310-9059.

“At Live Well, we find there is a relationship between (the foods you eat) and your overall health,” aid Arnold. “We have always encouraged our patients to eat real foods from as close to the source as possible that has nothing added or taken away..”

—Dr. Kris Arnold



Bedford Rural Electric Cooperative Inc.

Proud to be a part of the growth in Bedford County – where educational and professional opportunities are increasing.

A Touchstone Energy® Cooperative

814-623-5101

www.bedfordrec.com



WE’VE GOT THE GEAR FOR A LIFE ON TWO WHEELS

REI is proud to support Bike Bedford County, a non-competitive cycling event on August 15 that showcases the beauty of the Bedford County Region.

Jets, and planes and copters, oh my!

Bun Air Avionics takes flight

Have you ever wondered what it takes to keep a plane flying safely? Have you watched the ground crew hustle around the plane as you board? Part of what they're doing is double-checking and troubleshooting the aircraft's avionics.

Avionics refers to the services provided to maintain and install an aircraft's communication, navigation, autopilot and display equipment. The safety of the traveling public depends on this work being done well.

Now, Bedford County's Bun Air Avionics is certified by the Federal Aviation Administration. It's one of the few new facilities to be so designated.

As a result of this certification, Bun Air Avionics is now welcoming jets and helicopters from throughout the northeast to Bedford County Airport to receive avionic services.

This new designation is certain to provide an economic boost to Bedford County, and its airport. The services will be delivered under Part 145 of the FAA certification process, and will serve as a major draw for aircraft owners throughout Penn-

"More growth for Bun Air means more exposure for the airport and the adjoining Business Park."

—Jennifer DeLong

sylvania and the Mid-Atlantic region.

"The avionics certificate allows Bun Air to expand our services from primarily airframe and engine services to include the installation and testing of communication, navigation and flight management systems in airplanes and helicopters. This will bring more aircraft to the airport," explained Jennifer DeLong, co-owner of Bun Air Corporation.

The attraction of more aircraft to the Bedford County Airport translates to an increase in Bun Air's current maintenance services, which means more parts will be sold, as well as additional fuel sales. All of these services will make the airport a more convenient and desirable place to bring or base a private or corporate aircraft."

DeLong noted that few Part 145 certifications are offered, adding to Bun Air Corporation and Bedford County Airport's value to

the industry.

"More growth for Bun Air means more exposure for the airport and the adjoining Business Park," DeLong said. "This is very good news for the aviation industry, for Bedford County and for Bun Air."

DeLong said that Bun Air's Avionics Certification was made possible by The Pennsylvania State Fixed-Wing Tax Exemption passed in 2013 which removed the PA sales tax on aircraft parts and labor.

"The new Avionics certification has already led to the creation of two full-time positions at Bun Air", DeLong said.

Bo Pratt, Chair of the Bedford County Development Association (BCDA) Board of Directors, commented on the importance of Bun Air's Avionics' certification.

"A thriving, healthy airport is a major draw for economic development," Pratt said. "It's great to see that additions to the airport are continuing. "Our airport is a critically important resource for the entire community.



Jim DeLong stands in front of Avionics.

With this new ability to work on aircraft — including helicopters — the menu of services offered is greatly expanded. Charter flights and fuels sales are still available. However, the avionics designation is going to be key to the growth of

Bedford County Airport,"

noted Pratt. Bun Air Corporation currently operates six corporate aircraft and has been flying for more than 50 years.

BCDA has a Business Park located adjacent to the airport offering 3-5

acre lots. There is a second Business Park, with a 70-acre site, located within 2 miles of the airport. Both parks are designated as tax-free Keystone Opportunity Zones and are fully permitted. For more information, visit www.bcda.org.

This new designation is certain to provide an economic boost to Bedford County.

Bedford County Airport increases its marketing activities

With a strategic location, established aviation infrastructure, trained and productive workforce and available Business Parks, Bedford County is "soaring high."

Recent legislative approval of a tax exemption for fixed and rotor wing aircraft has created new marketing opportunities for the Bedford County Airport and adjacent Business Park property. Maintenance, overhauls and repairs can now be performed tax-free which enables Pennsylvania to now compete with adjoin-

ing states. This new exemption will enable aircraft owners and operators to save hundreds and possibly tens of thousands of dollars.

Working cooperatively, the PA Department of Community and Economic Development, BCDA, Bun Air and the air authority are in the final edits of a video outlining the many opportunities available at the Bedford County Airport and adjacent Business Parks. Additionally, these partners are designing a new and comprehensive website.



Nell Abom, Marketing Consultant for DCED, and her film crew interview Drew Swope, local pilot, regarding the benefits of the fixed-wing tax exemption and doing business at the Bedford County Airport.

With a strategic location, established aviation infrastructure, trained and productive workforce and available Business Parks, Bedford County is "soaring high."

Appalachian Regional Commission federal co-chair visits county



Touring Bedford County Business Park II - Phase II are: (L-R) Neil Fowler, PA DCED; Guy Land, ARC; Terri Brumbaugh, BCDA; Steve Howsare, SAP&DC; Sheri Collins, PA DCED; Earl Gohl, ARC and Brandon Carson, SAP&DC

"The BCDA's business development efforts, including building infrastructure to support business expansion, have strengthened the local economy and created new opportunities for growth."

— Earl Gohl, ARC. Co-Chair

Over the last 20 years, the Appalachian Regional Commission (ARC) has invested \$540,000 to support business expansion initiatives led by the Bedford County Development Association. Specifically, these federal investments were made in Bedford County Business Park I and II and have resulted in the creation of nearly 800 new full-time jobs and over \$50 million in private investment in the county. "The success of these business parks are a good example of how ARC funds can be leveraged to create jobs, attract investment, and improve quality of life for residents," said ARC Co-Chair Earl Gohl. "The BCDA's business development efforts, including building infrastructure to support business expansion, have strengthened the local economy and created new opportunities for growth."

Representatives from ARC, the Pennsylvania Department of Community and Economic Development and the Southern Alleghenies Planning & Development Commission recently participated in a Bedford County tour. Attendees included: Earl Gohl, ARC Federal Co-Chair, Guy Land, ARC Chief of Staff, Sheri Collins, PA DCED Office of Technology and Innovation Deputy Secretary, Neil Fowler, PA DCED Community Affairs and Development ARC State Program Manager, Steve Howsare, SAP&DC Executive Director, Brandon Carson, SAP&DC Director of Planning and Community Development, and Katie Kinka, SAP&DC Community and Economic Development Program Manager.

Additionally, the group toured the Bedford County Technical Center and Horn o Plenty. ARC recently invested \$103,500 in funding to support the Bedford County Technical Center (BCTC) Advanced Materials and Diversified Manufacturing Training Expansion Project.

Growth and expansion at Corle Building Systems

A national leader in metal buildings

What does it take to be a national leader in manufacturing? John Corle has a quick answer: a quality, skilled workforce. That's what he has at his Bedford County company near Imler.

In the past two years, Corle Building Systems has experienced incredible growth. As business has grown, the company has increased its facilities to meet the demands of the marketplace. A marketplace stretches to most points in the United States and Canada.

“Our business grew 35 percent last year,” said Corle, president of Corle Building Systems. “Our goal for this year is 12 percent.”

To expedite deliveries, an addition of 41,000 square feet will mean



John Corle

that the manufacturer will be more efficient in its supply chain getting its products to customers.

Trucks loaded at the plant are headed far and wide.

“This addition will also

help us in production,” Corle said. “And the materials will be stored inside, which is best.”

Corle Building Systems is a national leader in the manufacture of metal buildings. “We are creating far bigger buildings now than before,” said Corle.

Founded in 1990, Corle Building Systems now serves all of North America from its Bedford County headquarters.

Demonstrating the very best in “growth from within,” Corle was able to hire an additional 25 to 30 people last year, bringing total employees to nearly 200 people. New hires are expected this year to meet increases in building construction.

Corle's five-year vision for the company is clear: continued growth and improvement. “We're on the right track. We get better every day, every week, every year,” he said. “We constantly look to improve the products and processes we use.”

Corle attributes the company's phenomenal success to one thing: a great workforce. “It's the good people here that create our success,” he said. “From sales to engineering, drafting to construction, they're all good people.”

“It's the good people here that create our success. From sales to engineering, drafting to construction, they're all good people.”

- John Corle



John Moore of Moore Power Sales, provided two advanced sales training classes to county businesses as a part of the jobs first training grant.

Bedford County companies access training

Bedford County employers recently took advantage of a grant program that subsidized training to nearly 180 individuals.

BCDA worked with Southern Alleghenies Regional Partners to secure a Jobs 1st state training grant. This PA Department of Community and Economic Development grant provided regional businesses with a tool to assess training needs and then provide the necessary training.

As a result of surveys completed by the private sector, the following training needs were identified:

- o Advanced Sales Training
- o Blue Print Reading & Basic Math
- o Communications, Team Building & Conflict Management
- o CPR & First Aid
- o Forklift Certification
- o Forklift Re-Certification
- o Lead Based Renovation, Repair & Painting
- o Lean Certification
- o Medical Billing & Coding
- o Quality Assurance
- o Safety Awareness & Fall Protection for Heights
- o ServSafe
- o Slip, Trips & Safe Patient Handling in a Healthcare Setting
- o Supervisor Development
- o Supply Chain Logistics
- o Emerging Leaders

Bedford County held nine separate sessions for companies in the manufacturing, tourism, health care and service sectors. The sessions were provided at a reduced cost with grant funds paying 75 percent of the cost per person and the company paying 25 percent.



WE APPRECIATE YOUR LOYAL PATRONAGE!



Bill



Bob



Tom



Carolyn



Gene



Brian



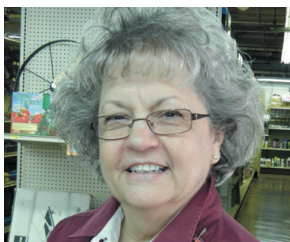
Eddie



Ethan



Frank



Kay



Lori



Luella



Brad



Roy

PLUMBING

- Submersible Well Pumps
A.Y. McDonald, Myers
- Sewage Pumps by Goulds, Wayne
- PVC 40 & Fittings
- PVC 80 Pipe & Fittings
- SDR 35 Gasketed Pipe & Fittings
- Culvert Pipe
- Black & Galvanize Pipe & Fittings

CUSTOM SERVICES

- Pipe Cutting & Threading 1/8" to 4"
- Window & Screen Repairs
- Window Blind Cutting
- Welding Supplies
- Safety Equipment
- Furnace Parts
- All Types Duct Work

ELECTRICAL

- Main Breaker Panel Boxes by Murray, Square D
- Circuit Breakers by Murray, Square D, ITE, Zin 260, Cutler Hammer, Wadsworth, Federal Pacific, General Electric
- PVC40 Conduit & Fittings
- EMT Conduit
- Rigid Conduit
- Complete Stock of Wire & Service Cable

We Deliver Your Materials Where and When You Want Them

ZIMMERMANS

131 East Main St., Everett • 652-5014 • Mon.-Fri. 7:30am-8pm; Sat. 8am-5pm

HARDWARE & SUPPLY CO., INC.

Nobody Sells More Real Estate Than Olde Towne Realty, Inc.



THE GRAYSTONE BUILDING • 203 EAST PITT ST.
SUITE 101 • BEDFORD, PA 15522
(814) 623-6700
HOURS: MON.-FRI.- 9-5; SAT. - SUN. BY APPT.
WWW.OLDETOWNE-REALTY.COM



Frank Pannebaker
REALTOR®
(814) 207-5720 (C)
fapannebaker@gmail.com



Todd Eichelberger
Owner/Broker



Cindy Caddy
REALTOR®
(814) 977-3023 (C)
ccaddy@oldetowne-realty.com



Cindy Pannebaker
REALTOR®
(814) 207-5720 (C)
fapannebaker@gmail.com



Vickie Lemley (Geisler)
REALTOR®
(814) 285-2241 (C)
vgeisler@oldetowne-realty.com



H. Dean Lemley
REALTOR®
(814) 977-0950 (C)
hdllemley@oldetowne-realty.com

COMMERCIAL

 9612 Lincoln Hwy., Bedford \$149,900 MLS 30679	 School Road, Bedford \$159,000 MLS 35867	 147 Sleepy Hollow Rd., Schellsburg \$535,000 MLS 36673	 203 S. Juliana St., Bedford \$349,000 MLS 37073	 110 School St., Bedford \$229,000 MLS 39159	 8751 Lincoln Hwy., Bedford \$199,000 MLS 39635
 8763 Lincoln Hwy., Bedford \$99,000 MLS 39639	 9525 Lincoln Hwy., Bedford \$495,000 MLS 41037	 159 Three Oaks Ln., Everett \$169,900 MLS 41567	 415 E. John St. Rear, Bedford \$69,900 MLS 41971	 806 Spring Street, Saxton \$20,000 MLS 42360	

RESIDENTIAL

 444 S. Juliana St., Bedford \$234,900 MLS 37174	 114 & 114A Seifert St., Bedford \$210,000 MLS 40665	 209 Starfield Road, Everett \$319,000 MLS 40806	 214 E. Watson St., Bedford \$264,900 MLS 40996	 193 Shadyside Dr., Bedford \$399,000 MLS 41890
 260 Bucktail Drive, Schellsburg \$329,900 MLS 42093	 6973 Bedford Valley Road, Bedford \$224,000 MLS 42164	 760 Quaker Valley Road, New Paris \$159,900 MLS 38832	 135 Reservoir Street, Everett \$325,000 MLS 41892	 140 Vine Street, Schellsburg \$169,000 MLS 42565
 11 Lincoln Drive, Bedford \$134,900 MLS 42538	 804 S. Juliana St., Bedford \$395,000 MLS 42129	 438 S. Juliana St., Bedford \$275,000 MLS 42135	 214 Highland Drive, Bedford \$425,000 MLS 42239	 1009 Ritchey Road, Everett \$199,000 MLS 41271

FARMS

 547 Wilkins Road, Everett \$249,000 MLS 41432	 331 Leader Road, Everett \$299,900 MLS 40451	 5719 Corland Rd., Alum Bank \$1,495,000 MLS 38680
 459 Tomco Rd., Schellsburg \$229,000 MLS 41477	 1061 Lovely Rd., Alum Bank \$210,499 MLS 42622	

LOTS FOR SALE

Located in Northern Bedford School District

In the little town of Salemville, small development, six lots. Excellent country setting, private, nice views, city water, percolation test completed and approved for sand mound systems, electricity available.

Contact Frank Pannebaker (814) 207-5720

Lot	Lot Size	Price
Lot 1	1.32 acres	\$30,500
Lot 2	1.0 acres	\$23,600
Lot 3	1.08 acres	\$25,200 SOLD
Lot 4	1.3 acres	\$29,900 SOLD
Lot 5	1.04 acres	\$24,400
Lot 6	1.04 acres	\$24,400 SOLD

JUNIATA MILLS SUBDIVISION

Located between Bedford and Everett, PA • Newly priced Building Lots

Bedford area schools. Deed restrictions apply on most lots. Public sewer, buyer must drill well.

Lot No.	Address	Size	Price
Lot No. 9	Mill Ridge Road	1.155 acres	\$62,500
Lot No. 10	Mill Ridge Road	1.13 acres	\$62,500
Lot No. 11	Mill Ridge Road	1.058 acres	\$42,000
Lot No. 12	Mill Ridge Road	1.015 acres	\$53,900
Lot No. 13	Raceway Circle	1.53 acres	\$38,500
Lot No. 14	Raceway Circle	1.18 acres	\$38,500
Lot No. 29	Mill Ridge Road	.556 acre	\$29,500 SOLD
Lot No. 32	Mill Ridge Road	.748 acre	\$29,500 SOLD
Lot No. 33	Mill Ridge Road	.745 acre	\$29,500 SOLD
Lot No. 34	Mill Ridge Road	.716 acre	\$29,500 SOLD
Lot No. 37	Mill Ridge Road	.729 acre	\$38,500
Lot No. 38	Mill Ridge Road	.729 acre	\$38,500
Lot No. 39	Mill Ridge Road	.777 acre	\$38,500
Lot No. 40	Mill Ridge Road	.752 acre	\$30,000
Lot No. 41	Mill Ridge Road	.528 acre	\$29,500
Lot No. 43	Mill Ridge Road	.597 acre	\$39,900
Lot No. 48	Mill Ridge Road	.581 acre	\$34,500 SOLD
Lot No. 51	Waterway Circle	.842 acre	\$37,900
Lot No. 52	Waterway Circle	.728 acre	\$29,000
Lot No. 53	Waterway Circle	.729 acre	\$32,000 SOLD
Lot No. 58	Grindstone Circle	.855 acre	\$42,900
Lot No. 60	Grindstone Circle	.467 acre	\$42,900
Lot No. 66	Mill Ridge Road	.614 acre	\$34,900
Lot No. 84A	Raceway Circle	.83 acre	\$39,500

LOTS				LAND			
Acres	Price	MLS	Address	Acres	Price	MLS	Address
0.487	\$12,900	37404	Rt. 31 Lot 1, Manns Choice, PA. NEW PRICE	58.078	\$139,000	36028	116 Sawblade Rd. Bedford. 700 ft. of road frontage on Bus. 220, public water, sewer, gas available.
1.1	\$23,000	36927	1801 Jacks Corner, Hopewell, PA.	8.59	\$49,900	38150	Comm./Residential along Rt. 56, public sewer. SELLER PAYS ALL CLOSING COSTS & TRANSFER TAX. REDUCED
2.95	\$15,500	41279	Lot 11, 2.95 ac. off Fleegle Rd., Schellsburg, PA.	7.02	\$39,900	33986	View, woods, underground utilities, perk approved for a sand mound septic system.
3.43	\$15,500	41280	Lot 12, 3.43 ac. off Fleegle Rd., Schellsburg, PA.	24.66	\$105,000	40069	Menchtown Road & Felton Hollow Rd. Everett, PA Nice building lot. Perk approved.
				35.982	\$110,000	39941	Bowser Rd, Osterburg, PA Ideal for a new home. REDUCED
				4.5	\$30,000	39969	168 Tynemead Lane, Breezewood, PA 4.5 ac. building lot, perk approved.
				1.806	\$25,000	40449	Lot 18 Buck Run 2, New Paris, PA - Build, Residence or Cabin, backed by 1,000 ac of forest land, hiking, etc.
				1.5	\$28,000	40666	Old Rt. 220 South, Bedford, PA - Building site with great view. 1.5 acres w/road frontage.
				3.35	\$49,900	40921	00 S Old Business Rt. 220, Bedford. Building site approved. Approved 2 perk sites and design completed. Owner will put in driveway and will Owner Finance.
				21.418	\$69,900	41229	Mtn. Rd., Schellsburg, PA. Nice property near the mtns., 2 parcels being sold together.
				75	\$195,000	41828	Rt. 30 West, 1,000 ft. road frontage, wooded, private well, and electric connection.
				35.982	\$119,000	42520	5188 Raystown Rd., Hopewell, PA - 70 ac., road frontage, minutes from Lake Raystown, trout fishing on Yellow Creek, bass fishing on Juniata River, close to State Game Lands. NEW LISTING

We not only sell Real Estate... we sell Bedford County!

Town Hill Auto Sales

Shop offers repairs, sales for those with less than perfect credit

By Cassidy Sherman
Gazette Staff Writer

Town Hill Auto Sales and Service in Bedford may sound like a typical used car lot, but Owner Scott Hendershot of Bedford County, said that isn't the case.

Hendershot is an auto diesel graduate of Bedford/Everett Vocational-Technical School, now the Bedford County Technical Center, and said he opened the Bedford location at 3613 Business 220 in early 2014 because a majority of his clients were coming from Bedford and Everett.

Town Hill Auto Sales is primarily about vehicle repairs, and people unable to go down the road of a traditional car loan.

"Where I was [previously] located, there was no one doing repairs for people with bad credit," Hendershot said. He said he feels that even people with bad or less than perfect credit, need a functioning vehicle, too.

Hendershot said that in order to buy a vehicle at Town Hill Auto Sales, a customer needs to provide a down payment and can drive away with a vehicle that day, but must write a check to the company each month to make payments. The owner said that as long as the cus-



The staff of Town Hill Auto Sales and Service poses outside of the Bedford location at 3613 Business Route 220. From left are Travis Howard, Technician, Jim Putt, Service Manager, Jill Young, Office Manager, Willis Hendershot, Towing, Scott Hendershot, Owner, Robert Riggelman, Detailing, Max Howard, Technician, Garrett Keifer, Shop Assistant, and Shane Fox, Sales.

Gazette Photo/Cassidy Sherman

tomers are making payments, the shop will make any needed repairs to the vehicle. Town Hill Auto Sales also prides itself on a no pressure system of buying a car to ensure the customer will be able to

make payments on the vehicle for the duration of the loan.

"We're not going to talk you into something you can't afford, because we are also the bank," Hendershot explained. Hen-

dershot said that for people having a vehicle repaired, they may receive a free or low cost rental car until the repair is completed. The owner also said that he and all of his technicians are completely

Automotive Excellence Certified.

Town Hill Auto Sales and Service also offers full car detailing (except for paint work), and full service repairs, rental cars, and loaner cars. In the near future, Hendershot is working on building an oil change and inspection station and paintless dent repair. Hendershot also wanted customers to know that they will not have to make an appointment to get an oil change at Town Hill Auto.

"People don't want to make an appointment to get their oil changed, they want to go when they think about it," Hendershot said.

In the distant future, Hendershot wants to start offering higher-end vehicles and a limousine service to cater to the resort crowd at Bedford Springs and others because there are very few rental companies based in Bedford County.

Eventually, Hendershot said he would like to be completely operational as a full car and service center like a dealership.

Visit the website at <http://townhillautosales.com> or call 814-310-2221 for more information.

Bedford County's Top 20 Employers

- | | |
|---|--|
| 1. Wal-Mart Store Associates | 12. Everett Area School District |
| 2. New Enterprise Stone & Lime Co. | 13. Tussey Mountain School District |
| 3. Pennsylvania State Government | 14. Rockland Manufacturing Company |
| 4. Kennametal, Inc. | 15. Bedford County Commissioners |
| 5. UPMC Bedford Memorial | 16. Central Pennsylvania Homecare, LLC |
| 6. Omni Bedford Springs Resort & Spa | 17. Aerotek, Inc. |
| 7. Recreational Equipment, Inc. (REI) | 18. Northern Bedford Co. School District |
| 8. Truckstops of America Gateway Travel | 19. SAC, Inc. |
| 9. Bedford Area School District | 20. Ruggieri Enterprises |
| 10. Chestnut Ridge School District | |
| 11. Bedford Reinforced Plastics, Inc. | |

—Source: Bedford County Chamber 2015

DECKSIDE LANDSCAPING SERVICE

- Yard Cleanup
- Mowing/Trimming
- Planting/Mulch
- Tree Pruning
- Flower Beds

Credit Cards Insured Free Estimates

Serving Bedford County & Surrounding Areas
814-977-3022
PA #111248

Town Hill Auto Inc.

Sales and Service

We're your one stop shop for ALL your automotive needs!

Standard Oil Changes • \$19.95
***up to 5 qts. oil w/ filter**

PA State Inspections • \$19.95

ASE Certified Master Technicians/Mechanics

We Service ALL Makes and Models Foreign and Domestic!

Free Pick-up and Delivery Available for Rental Detail AND Service Customers!

www.TownHillAutoService.com

Summer Service Special!

Getting ready for a trip? Make sure your vehicle is ready too!

Oil Change • Tire Rotation • Fluids Checked and Topped • Brakes Inspected, Cleaned & Lubricated
Tire Pressures Set • Complete Vehicle Inspection • ALL Makes & Models

ONLY \$84.99!!! Call now to schedule your appointment.
We look forward to serving you.

\$115 Value
*Upcharge for Synthetic blends and full synthetic oils

3613 Business 220, Bedford, PA 15522 814-310-2221

IMPRESSIVE FLOORS, INC.

ImPressive Floors provides flooring and window treatments commercially to railroads, hospitals, hotels, banks, manufacturing facilities, daycares, government buildings, restaurants, nursing homes, etc. in PA, MD & WV. Aspects of a commercial project can seem overwhelming to the faculty of such offices in part because they continue to remain open during renovations or operate with strict timelines. With foot traffic on the floor from staff or customers during renovations, it is important to work with a company large enough to handle the project with quality flooring mechanics and is safety focused, quality conscious, design oriented and product knowledgeable. Both residential and commercial customers alike can rest assured, they will get nothing less than IMPRESSIVE FLOORS for years to come!

118 South Richard St., Bedford
Hours: Mon. thru Thurs. 9-5, Fri. 9-7, Sat. 9-3
623-0626
www.impressivefloors.net

Bedford County Technical Center continues to meet needs of industry

New equipment expands welding program

Continuing its long record of meeting the needs of Bedford County industry, The Bedford County Technical Center applied for, and received, a substantial grant. The funds were used to expand the school's well-known welding program. It was clearly a county need that many companies are pleased to support.

The BCTC received a \$103,500 grant from the Appalachian Regional Commission (ARC) to upgrade its welding program. That money was leveraged to receive matching funds. The total project cost is \$220,000.

"Local businesses have been asking for this," said David DiPasquale, administrative director, BCTC. "It has also helped us improve our workforce training facility. I feel great about this expansion. It feels right. Using the grant, and matching funds, we were able to purchase a Haas CNC mini mill, several Haas tabletop trainers, a CNC plasma cutting table and new welding equipment."

DiPasquale is pleased that the BCTC has been able to respond to the needs of local industry. "BCTC has always done a great job of preparing our students with solid skills for industry," he said. "As companies grow, the demand for skilled labor will also grow."

Going forward,



Welding is a popular program at the Bedford County Technical Center.

DiPasquale expects to see growth in the welding and CNC programs at the BCTC. "With the new equipment, we can prepare our students on a much higher level than before," DiPasquale said. "The plan going forward is to create a cohort of students that are willing to receive the training on the CNC machinery."

The BCTC has been discussing the possibility of connecting its program with the longer CNC program at the Allegany Col-

lege of Maryland. "I truly believe that this kind of training will catch on quickly. I can see a time in the near future where BCTC will need more space to expand its programming," said DiPasquale.

DiPasquale noted that a number of Bedford County companies are expanding. "As companies grow, the demand for skilled laborers will also grow. The new equipment puts us in a better position to help our local

companies expand because we can teach the appropriate high tech skills that they need to be competitive."

"The much-needed expansion into the world

of computer numerical control is exciting," DiPasquale noted. "However, receiving the Governor's Achievement Award with Lampire Biological Laboratories was also a

great thrill. Lampire has been a great partner through the years and we are honored to have accepted this award alongside Gregory F. Krug and Gary Klingler."

Southern Alleghenies Planning and Development Commission (SAPDC)
SAPDC's Loan Program helps businesses maintain and increase their markets and create new jobs. Eligible businesses can apply for low interest financing if they are unable to finance projects with conventional loans. Specific terms and conditions vary according to the funding source.
<http://www.sapdc.org/business/lending>

The Progress Fund
Lending off the beaten path, the Progress Fund provides financing from \$20,000 to \$1 million to people who are starting, expanding or buying small businesses. Their loans can be used to purchase property, restore and rehabilitate buildings, purchase inventory or equipment, buy the assets of an existing business, and for working capital.
<http://www.progressfund.org/small-business-loans/>

"As companies grow, the demand for skilled laborers will also grow. The new equipment puts us in a better position to help our local companies expand."
— David DiPasquale



Bedford Grange Mutual Insurance Company

since 1909

**Home • Farms • Mobile Home • Business
Renter's Insurance • Umbrella
Rental Property Insurance**

477 West Pitt St., Bedford, PA 15522 • www.bedfordgrangemutual.com
814-623-8515 • 800-707-2246





FORTRESS INSURANCE AGENCY

**Auto • Home • Farms • Mobile Home
Business • Boat/ATV/Cycle • Renters**

477 West Pitt St., Bedford, PA 15522 • office@fortressagency.com
814-623-0074 • 800-707-2246



**CONVENIENTLY
LOCATED AT THE CORNER
OF RICHARD & PITT
STREETS**

Summer Hours:
Mon-Fri 7-5
Sat 8-5
Sun 10-3



103 S.
Richard Street
Bedford, PA 15522





OVER 40 YEARS OF PENNSYLVANIA PRIDE

As Bedford celebrates over 40 years of bringing innovative building materials and solutions to the world, we've never forgotten our roots. The people and values of Central Pennsylvania have always been at the heart of our success, and we're proud to call this area home.

BEDFORDREINFORCED.COM

Twisted Trout brings a touch of urban lifestyle to Bedford

The Twisted Trout restaurant and martini bar opened on Oct. 9, 2014, at the location of the former Carriage House Restaurant along Route 220 north of Bedford.

Owners Darrin and Suzette Troutman have brought a touch of the urban lifestyle to Bedford with combination of industrial elements, modern lights and antique decor. The restaurant features a plate steel bar crafted by Jerry Clapper of Jerry's Arc and art that has been gifted to the Troutmans by local patrons.

The restaurant business is nothing new in the Troutman family. Darrin's mother, Nancy, has owned the New Frontier Restaurant, located along Route 36 just south of the Loysburg Gap, for 38 years. And, his brother, Dana, owns the Kountry Kettle Restaurant along Route 26 in Hopewell Township.

"My wife and I are empty nesters and were looking for something to do. We love food, and we enjoy being around people," Troutman said, so opening the Twisted Trout seemed like the perfect empty nester venture. "I wanted to bring a place to Bedford County that I would enjoy going to."

The Twisted Trout is considered upscale casual and serves a wide range of food. Everything from wings to oysters make up the menu. Many items are served with the signature "Twisted" sauce that seems to be a favorite with patrons. The restaurant features daily chef specials and happy hour deals.

Since opening, The Twisted Trout has had events like an '80s night and a Kentucky Derby



Darren and Suzette Troutman pose outside the Twisted Trout on Kentucky Derby Day.

Day. The restaurant has live music most Saturdays and Wednesdays featuring a variety of local artists. The Troutmans have also enjoyed becoming a part of the Bedford community and participating in local events. The restaurant donates to local sports groups, the humane society, the Chamber events after hours and chili cook off and DBI events Girls Night Out and just recently the Wing Off.

The Twisted Trout is in the process of expanding the restaurant with an outdoor dining area expected to be opened

before the end of July.

The Twisted Trout has 10 employees, including two full-time chefs. The restaurant and martini bar are open from 4 p.m. to 2 a.m. Tuesdays through Saturdays, and from 11 a.m. to 2 a.m. on Sundays. The kitchen closes at 10 p.m. during the week and at 11 p.m. on Fridays and Saturdays. In addition to an extensive martini list, the full bar has 12 rotating beer taps.

Learn more about the Twisted Trout by visiting its Facebook page, <https://www.facebook.com/TheTwistedTrout>.

Owners Darrin and Suzette Troutman have brought a touch of the urban lifestyle to Bedford.



The Twisted Trout's modern plate steel bar is accented with lighting.

EXPERIENCE THE ORTHOPEDIC DIFFERENCE

Inquire about our Joint Commission Certified Rehab Orthopedic Program

ASK FOR US BY NAME!

REBATES » UP TO \$1400

FINANCING » AS LOW AS 1.99%

EXTREME SAVINGS GOING ON NOW

STOP BY TODAY FOR INCREDIBLE OFFERS AND UNBEATABLE SERVICE.

Last Weekend for Rebate! Sale ends 6/30!

Closed Sunday & Monday, Open Tuesday & Thursday 9-7
Wednesday & Friday 9-5, Saturday 9-4

10091 LINCOLN HWY., EVERETT, PA 15537
LOCATED ON RT. 30 ACROSS FROM WALMART

PHONE: 814-623-6500 • WWW.RIDEFPS.COM

RESTRICTIONS: *Offers valid from 5/1/15 - 6/30/15 on select new 2014-2015 Polaris® Off-Road Vehicles. Youth models excluded. Does not apply to prior purchases. **Rates as low as 1.99% for 36 months are available. Offers only available at participating Polaris® dealers with purchase of qualifying Polaris accessories (\$3500 in Ranger® accessories, \$2500 in RZR® accessories, \$3500 in ACE® accessories, \$1000 in ATV accessories). Fixed APR of 1.99%, 6.99%, or 10.99% will be assigned based on credit approval criteria. An example of monthly payments required on a 36-month term at 1.99% is \$20.94 Per \$1,000 financed. An example of monthly payments required on a 36-month term at 6.99% APR is \$30.87 Per \$1,000 financed. Rates as low as 2.99% for 36 months are available. Approval, and any rates and terms provided, are based on credit worthiness. Fixed APR of 2.99%, 6.99%, or 10.99% will be assigned based on credit approval criteria. 72 Months financing available with rates as low as 7.99% Based on approval and credit worthiness. Fixed apr of 7.99%, 10.99%, 13.99% Will be assigned based on credit approval criteria. Other financing offers are available. See your local dealer for details. Minimum amount financed \$1,500; maximum amount financed \$50,000. Other qualifications and restrictions may apply. Financing promotions void where prohibited. Offer effective on all new and unused 2014-2015 Polaris® ATV, Ranger®, AND RZR® models purchased from a participating Polaris® dealer between 5/1/2015 and 6/30/15. Offer subject to change without notice. An example of monthly payments required on a 36-month term at 2.99% is \$28.09 Per \$1,000 financed. An example of monthly payments required on a 36-month term at 6.99% APR is \$30.87 Per \$1,000 financed. An example of monthly payments required on a 72-month term with a fixed APR of 7.99% is \$17.53 Per \$1,000 financed. See participating retailers for complete details and conditions. Approval, and any rates and terms provided, are based on credit worthiness. Applies to the purchase of all new ATV, Ranger, AND RZR models made on the Polaris installment program from 5/1/15-6/30/15. See participating retailers for complete details and conditions.

WARNING: Polaris® off-road vehicles can be hazardous to operate and are not intended for onroad use. Driver must be at least 16 years old with a valid driver's license to operate. Passengers, if permitted, must be at least 12 years old. All riders should always wear helmets, eye protection, and protective clothing. Always use seat belts and cab nets or doors (as equipped). Never engage in stunt driving, and avoid excessive speeds and sharp turns. Riding and alcohol/drugs don't mix. All riders should take a safety training course. Call 800-942-9784 for additional information. Check local laws before riding on trails. ©2015 Polaris Industries Inc.

Everett Cash Mutual Insurance Co.

Farm Insurance is Our Specialty

Ask about our new Farm Workers Compensation Product!

Serving PA, MD, IN, NC, VA, KY, OH, TN, GA through Independent Insurance Agents

www.everettcash.com



**OUR TEAM
WILL BE GLAD
TO JOIN FORCES
WITH YOU!**

**NOT JUST A COMMUNITY BANK,
A BANK FOR THE COMMUNITY.**



The Hometown Bank Advantage ~ Some Advantages to Bank With Us:

- No mid day cut off - no rush to get to the bank by 2:00
- Same day credit for deposits, next day availability quicker access to your money
- Week day drive-up opens at 8:30am
- Week day lobby open til 5:00pm
- Saturday lobby & drive up open 9:00am to 12 noon
- No call center - your questions are answered by someone you know
- Check imaging provided at no charge - copies of your checks in your monthly statement at no charge

***Hometown
Bank's
LOCAL
Board
Of
Directors***



Front Row (L to R): Merle Helsel, Donald DeArment, Ted Chwatek Back Row (L to R): Darrell Dodson, Bob Appleby, John Corle, Barry Ressler, Todd Roadman

BEDFORD
638 E Pitt Street
623-6093



EVERETT
306 W. Main Street
652-6093

www.hometownbankpa.com

Member
FDIC



Reclamation is a ‘lifestyle shop’

By Erin Thompson
Gazette Staff Writer

Reclamation is more than your typical consignment shop, according to Kristi Hillegas, who opened the business last September with her husband Brandon.

“We focus on creativity,” said Kristi, who said the shop offers items such as jewelry, local jams and clothing that are designed and created locally. “We are selective and choose items that are unique, of great quality and great style.”

Kristi said Reclamation Consignment and Gift Shop offers a number of in-store classes where local service providers give customers the opportunity to learn and create. When the Hillegas’ started the shop last year, they had a drive for a particular lifestyle that they wanted others to be aware of.

“We’re passionate about



Gazette Photo/Erin Thompson

Reclamation, in downtown Bedford, opened its doors last September and currently has about 300 local cosigners. Shown are Taylor Foster, subcontractor for the company, and Kristi Hillegas, owner, discussing the work of one of their cosigners.

the local lifestyle because when we’re doing well, our cosigners, artisans and community are doing

well,” said Kristi, who added that her goal for the business is to make their business, which now

has nearly 300 local cosigners “stay in downtown Bedford and reflect the downtown community

and personality.”

Kristi said she wants her shop to always be community driven. “Our success isn’t just reflecting on us,” she said. “It’s reflecting on everyone involved.”

Kristi said she and her husband are proud that their customers can save money and that their vendors can earn money through consignment, as well as be creative with one another.

Reclamation is “growing fast,” according to Kristi, who said they are looking to expand into a larger space in downtown Bedford where it can offer more community workshops and feature work from more artisans.

“We call ourselves a lifestyle shop,” said Kristi, who added that she and her husband, who is an artisan for the shop, like to promote a rich lifestyle. “Wealth is a mindset. Reclamation’s

mission is to encourage individuals to achieve and attain their goal for rich living. We want to be a part of increasing the value and fullness in your life.”

Brandon is from Schellsburg and graduated from Chestnut Ridge High School. Kristi grew up in Osterburg and went to college at University of Cincinnati, then moved back to Bedford County when she married Brandon.

This is the couple’s first business endeavor, but both have had prior work force experience. Prior to opening Reclamation, Brandon worked at Kennametal, and Kristi worked in marketing.

Reclamation is located at 105B S Richard Street and is open Monday through Thursday 10 a.m. to 7 p.m. and Saturday 10 a.m. to 8 p.m. The website is www.shop-reclamation.com.

My Neck of the Woods

By Cassidy Sherman
Gazette Staff Writer

“My Neck of the Woods,” isn’t just a popular saying. It’s also the name of a Bedford artist’s new home decor and photography store dedicated to highlighting the charms of Bedford.

Cumberland, Maryland native, and Bedford resident of 25 years, Kris Hott was diagnosed with cancer in 2008. After completing treatment, she decided to take her life back by checking off visiting Alaska on her bucket list she said in an email interview.

Hott said she bought a digital camera and went to practice her photography skills. The positive feedback from her friends and family gave her the confidence she needed to accomplish the dream of opening her own shop, My Neck of The Woods. She is the sole owner and shop-keeper, however she has she has a variety of local partners that she uses to help her create her pottery and ironwork, and photogra-

phy prints.

“I decided to incorporate a mix of area artisanship with my photography that reflected the area in some way,” Hott said. She also explained her photos are made on canvas, paper and metal to create an artistic and unique piece of art for her customers to take home and cherish memories from the area.

Hott said she is a self-taught photographer who is inspired by the the community of Bedford because she enjoys photographing “the simple things.”

Hott seeks to provide a cozy and relaxed feel for her visitors with a unique collection woodworking designs, industrial home decor, pottery, handwoven throws, iron work, and Bumbleberry Farms honey products and Hosselrode Maple Products. My Neck of the Woods is open from on Monday, Thursday, Friday and Saturday from 11-6, and Sunday from 12-4. The shop is closed Tuesday and Wednesday. Visit www.myneck-ofthewoods.net or call 814-414-1858 for more information.



—Photo Submitted

My Neck of the Woods offers home decor items — including pottery, ironwork and unique photography prints.

DALLARA

BEDFORD COUNTY COMMISSIONER

*Preserving Our History
Promoting Our Future*

A huge thank you to the business and industry leaders who provide viable jobs to our citizens. As we strive to enhance our quality of life, I pledge my full cooperation to help all of you increase the number of Family Sustaining jobs within our Bedford County.

Bedford County citizens provide a workforce to employers that is second to none. In an increasing global market, it is vital that employees be technologically savvy, possess effective communication skills and can prove that they are an asset to the organization.

Because of our heritage, work ethic and infrastructure, I believe we will see new employment opportunities in our county in the near future.

Thank you for making Bedford County a wonderful place to live.



**THE COMMISSIONER WITH THE EXPERIENCE
NEEDED TO IMPROVE OUR QUALITY OF LIFE**



Gary Brasseur, General Manager

*Thank
You*

*for another year of
success in 2014*

WAL★MART®

DISTRIBUTION CENTER #6047

*Continuing the Tradition of
Excellence in Bedford County*

Somerset Trust expands in Bedford County

Regional bank adds Bedford County office

G. Henry Cook, president and CEO of Somerset Trust knows a good investment when he sees one. That's why he is pleased to be adding a new branch office of his institution along Route 30 between Bedford and Everett.

Cook knows that the economic development community in Bedford County is a forward-looking group that is seeking to maximize every opportunity to create good jobs. He sees the growth in Bedford County and understands the value of the area's superior workforce.

"We are unfolding our franchise in Bedford County," said Cook. He is the sixth generation of his family to run the business and looks forward to keeping it family-owned.

In the last two years, Somerset Trust has built more new branches than any bank in the Commonwealth. At the end of 2014, the financial company had 30 offices in south central Pennsylvania.

Somerset Trust has been voted as a "Best Place to Work in Pennsylvania" nine times and was named the second Best Bank to Work For in the nation by the American Banker, an industry publication for the financial sector.

Somerset Trust's believes establishing a second branch in Bedford County is needed to serve the growing financial needs in the county.

The tempo of expansion has been upbeat, according to Cook. The company has gone from 100 employees to 350 in three years. The addition

of a second branch office in Bedford County is sure to mean an additional need for quality workers.

"When measuring return on equity, an important goal for a bank, Somerset Trust is ranked 16th out of 7,000-plus American banks. Maintaining that number is "my Super Bowl," Cook said.

For 125 years, the philosophy at Somerset Trust has remained the same: A passion for customer service and at the same time, a passion for new technology.

The bank was named top online bank in the country two years ago. Even with a commitment to new banking technology, the bank's phones are answered by real people 80 hours each week. That's a promise to customers that Cook intends to keep.

"The focus on an excellent workforce makes Somerset Trust a perfect match with Bedford County. Since first-rate service will demand a first-rate staff," Cook noted.

AMVETS dedicated to supporting veterans

By Cassidy Sherman
Gazette Staff Writer

Veterans make the ultimate sacrifice, and AMVETS is dedicated to making sure that members of the U.S. Armed Forces are well taken care of after their service.

AMVETS is a national non-profit association dedicated to helping returned and serving veterans feel they are part of a supportive community and readjust to civilian life. The AMVETS organization is working to have a fully operational organization in Bedford by fall of 2015.

Josh Lang of Everett, who sits on the advisory board for The AMVETS Lawyer Transition Program and a leader of the new Bedford branch said that during their first meeting, the members of the town seemed enthusiastic about creating a place where veterans young and old can get together to share their experiences and help their grow their community. Lang said the post will help Bedford because the organization holds many events to help fundraise for various associations throughout the region.

AMVETS provides a variety of services and

benefits to former, current, and reserve members. The organization offers scholarships to military members, dependents, and promising students, an "Americanism" program which helps America's youth become interested in American history and instill national pride and patriotism; thrift stores and legal services to members trying to obtain benefits or compensation according to the AMVETS website.

"It's a way to supplement existing veterans services," Lang said.

Stewart Hickey, the national director of AMVETS and Bedford County resident, said he encourages younger members to join because unlike other organizations, it does not come down to which war you served, which branch you served in, or how many years of service you have, just that they served honorably.

"I belong to all the other [veterans] organizations and I think the thing about AMVETS that sets it apart because they accept all members," Hickey said.

Lang said the location of the Bedford branch is not yet known. Currently, the closest office is in Loretto, Cambria County,



Josh Lang



Stewart Hickey

Chambersburg, Hagerstown, Maryland, or Falling Waters, West Virginia

For more information, visit www.amvets.org, call 877-726-8387 or email amvets@amvets.org.

Bedford County by the numbers (2014 U.S. Census statistics)

Population: 48,946
Persons per square mile: 2,000
Labor Force: 23,800
Non-agricultural Percentage of Employment by Industry Group
Services 32%
Government 15%
Retail Trade 15%
Manufacturing 14%
Transportation, Warehousing and Public Utilities 11%
Construction 8%
Wholesale Trade 3%
Finance, Insurance and Real Estate 2%

Did you know.....

Bedford County is located in the foothills of the Southern Allegheny Mountains within a 500-mile radius of more than 40 percent of the nation's population, less than three hours from Baltimore, Washington, Pittsburgh and Philadelphia. The county has been touted for its exceptional transportation network with more Interstate Highway miles than any other county in central Pennsylvania.

Bedford County lies at the very hub of transportation routes of the Mid Atlantic states: 100 miles from Pittsburgh, 150 from Baltimore and Washington and 200 from Philadelphia. At the crossroads of the Pennsylvania Turnpike, Interstates 70 and 99 and U.S. Routes 220 and 30, it is within easy reach of other major concentrations of industry and population.



Celebrating our local connections since 1796!

The legendary Omni Bedford Springs Resort makes every effort to stay local. Our first choice for all our operational needs is to source from Bedford County vendors or suppliers within the state of Pennsylvania. We are proud to support local progress & industry.

OMNI  RESORTS
bedford springs
pennsylvania

814-623-8100

omnihotels.com/bedford

Creekside Resort and Ranch

Take a vacation in natural beauty surroundings

By Cassidy Sherman
Gazette Staff Writer

If your idea of a good vacation is natural beauty with modern amenities, the Creekside Resort and Ranch may be the right place.

Creekside Resort and Ranch opened a 240-acre resort property on its 400-acre ranch in the fall of 2013. Owner Craig Ziler of Buck Valley, said that he thought building the resort in Clearville in Monroe Township, would bring people in from all over.

Although the facility is fairly new, Sheeder said that bookings fill up far in advance.

"There is no such thing as booking too early, since I have taken wedding deposits all the way into 2016 and two for 2017," Sheeder said.

The venue offers a three-bedroom, three-bathroom rental property for guests visiting for weekend getaways, family gatherings, special events and weddings as well as five updated cabins. Ziler's mission is to keep



In this photo from Creekside Resort, the rental house overlooks the resort's grounds and pavillion in Clearville. Pavillions and cabins are available to rent at the resort.

the resort functioning at the highest quality standards.

"It has to be first class, and we want it to stay like that. It's got to be first class, all the time," Ziler said.

Each cabin and the rental property is equipped with Direct TV, a full set of pots and pans for preparing food, heating and air conditioning, furniture and barbeque grills according to the

Resort Manager Robin Sheeder. The resort also offers a cabin for persons with disabilities.

The venue is ideal for special events because the property offers gazebos and pavillions that can seat up to 200 people. The resort is working to build more.

For guests staying at Creekside, it is necessary for them to bring their own food to prepare. Sheeder said she wants people to know that although the facility doesn't provide food, they have all the equipment people need to prepare a full meal. In the future the resort hopes to provide catering on-site.

Sheeder also said the resort is a BYOB for those looking to bring their own alcoholic beverages. She mentions that even though they allow people to bring their own beverages, guests should know that they are still held to



In this photo from Creekside Resort Randy Hall and Craig Ziler ride horses on the resort grounds in Clearville, Monroe Township. The resort opened in the fall of 2013.

the safety standards of the Pennsylvania Liquor Control Board about drinking and driving, underage drinking and serving a guest too much alcohol.

Sheeder explained that the cancellation policy for weekend or special events is flexible to allow guests to cancel up to seven days before their scheduled visit however, a wedding deposit is non-refundable.

The staff has planted an orchard and have begun

building a winery on the grounds. It also plans to build a miniature golf course, make three season pavillions and eventually provide catering for weddings and special events to make weddings and business retreats easier, Sheeder said.


For more information on how to book a cabin for a weekend getaway, special event or wedding, visit, <http://creekside-resort.com> or call the resort at 814-784-0062.



In this photo from Creekside Resort and Ranch, a gazebo and fishing dock face Big Creek at the Creekside resort in Clearville. The resort caters to weekend travellers, weddings, vacationers and special events.

LEAD BY EXAMPLE

RE-ELECT PAUL CROOKS



FOR COUNTY COMMISSIONER

Leaders

PAID FOR BY THE CANDIDATE

THE BISON CORRAL

Come see the bison roam
Celebrating 20 Years



Full Line of Bison Meat, Area's largest selection of
Native American Jewelry & Artifacts, Pottery,
Handmade Knives, Native American Music, Nuwati Herbal Products,
Sandpaintings, Dream Catchers, Bison Souvenirs, Coin & Stamp Sets, T-Shirts & Jackets, Bison Socks, Dance Rattles, Dream Catchers, Ironwood & Soapstone Carvings, Incense & Smudging Materials

2 MILES W. OF SCHELLSBURG ON RT. 30
814-733-2323

Hours: Mon-Sat. 10 a.m. - 5 p.m.; Sunday Noon - 5 p.m. or by appt.
Overnight Lodging Available in Our Guest House

B COZ U R MPORTNT 2 US

In keeping up with all the trends the world wants, we offer you the opportunity for you to email, text and leave voicemails. But ...

BECAUSE YOU ARE IMPORTANT TO US

We still like to do things the way they need to be done:

ACCURATELY - DETAILED - IN YOUR BEST INTEREST

You are invited to stop in our convenient location and experience the old-time values of

THE BRAD WILL TEAM

124 East Main Street, Everett, PA 15537



Tangy



Brad



Eva



First class of students already enrolled in exciting new career opportunity

Somerset County Technology Center creates a “bridge” program in Bedford County

Program is housed in BCDA’s Hess Business Center

The quality of health-care in Bedford County is likely to improve with the launching of an exciting new practical nursing program. Created by a cooperative effort that included leadership from the Bedford County Development Association, the new program will be administered by the Somerset County Technology Center's School of Practical Nursing.

The practical nursing program is seen as a major step forward for students in Bedford County because it will provide a bridge between two levels of instruction already being offered. The Bedford County Technical Center currently offers a health-assisting program while the Allegany College of Maryland offers a Registered Nurse program.

“By offering a Practical Nursing program in Bedford County, the Somerset County Technology Center hopes to bridge the gap and offer students another avenue in the healthcare pathway,” said Heidi Petrosky, adult education coordinator for SCTC.

The program will be conveniently located in the Hess Business Center operated by BCDA. It has been enthusiastically

embraced by the health care providers in Bedford County.

“The Bedford County Development Association has been an integral partner in our quest to open a new Practical Nursing site,” said Petrosky. “Their support and willingness to help grow our program is a major economic advantage for us.”

Bo Pratt, Chair of the BCDA Board of Directors, recognizes the new program as a major step forward in both workforce development and health care delivery in Bedford County.

“This new program from SCTC is a bridge to the future of Bedford County,” Pratt stated. “We are extremely pleased to be in a position to contribute to its creation. Bedford County students will now have another career path to explore.”

The new practical nursing program will represent a significant investment for the SCTC. “Any new program has a tremendous amount of start-up costs. It will mean buying additional equipment and furnishings, including lab equipment. Additional staff people are also being hired to serve the Bedford County students,” said Petrosky. The program will also be seeking donations of used hospital fur-



Linda Bagley, SCTC Nursing Instructor

niture and supplies.

Petrosky explained that demographics -- including the aging of the Bedford County population -- indicate that practical nurses graduating from the SCTC program will find many opportunities for employment.

“Community support is crucial to the program's potential for success,” Petrosky said. The SCTC has

already entered into partnerships with several health care providers in Bedford County. “We hope to gain additional support from other providers as our program takes off,” she said.

The new program has the added benefit of greatly enhancing the delivery of health care to Bedford County citizens. While nursing shortages are a

major concern nationally, a program like the SCTC program will provide a steady flow of practical nurses in the region.

The Practical Nursing program is a one-year program (1,550 hours) that prepares students to pass the state licensure exam to become an LPN. The Bedford County program will accept 20-25 students each year. Financial aid

will be available.

“This is indeed a significant addition to BCDA's efforts to help our workforce acquire the skills and experiences needed to land family-sustaining jobs in local communities. We are happy that we have been able to work with the SCTC to establish this very important new training opportunity,” said Pratt.

Petrosky explained that demographics -- including the aging of the Bedford County population -- indicate that practical nurses graduating from the SCTC program will find many opportunities for employment.

Announcing FREE access... ALL THE TIME!



The Bedford Gazette **PRINT SUBSCRIBERS** now have **FREE ACCESS** to all website content, including local news and sports stories. *Enjoy the convenience of reading *The Bedford Gazette* online whenever you want, wherever you are... at home, in the office, or on the go... using your computer, smart phone, or tablet.

Visit www.bedfordgazette.com/freeaccess to set-up your free online subscription.
Not a print subscriber? Call 814-623-1151.

Bedford Gazette

www.bedfordgazette.com

Free access ...all the time.

*Must have a current Bedford Gazette print subscription in good standing to receive free access to the online edition. Your name, address, phone number and email address are required to set up a free online subscription. No purchase necessary to enter the drawings. Entries without a purchase are accepted at the Bedford Gazette office during regular business hours.